



## Santa Cruz County Animal Shelter

2200 7<sup>th</sup> Ave., Santa Cruz, CA 95062

580 Airport Boulevard, Watsonville, CA 95076

Phone: (831) 454-7200 Fax: (831) 454-7210

Melanie Sobel  
General Manager

**SANTA CRUZ COUNTY ANIMAL SHELTER  
BOARD OF DIRECTORS MEETING  
December 14, 2015 – 3:00 p.m.  
Board of Supervisors Chambers, Fifth Floor  
701 Ocean Street, Santa Cruz, CA 95060**

- 1.0 Call to Order and Roll Call**
- 2.0 Introductions**
- 3.0 Consideration of Late Additions or Changes to the Agenda**
- 4.0 Oral Communications – Any person may address the Santa Cruz County Animal Shelter Board of Directors during the Oral Communications period. All Oral Communications should be directed to items or issues that would be within the jurisdiction of the Santa Cruz County Animal Shelter but not on today's Agenda. Board members will not take actions or respond immediately to Oral Communications presented, but may choose to follow-up at a later time, either individually or on a subsequent Agenda.**
- 5.0 Consent Agenda**
  - 5.1 Approve minutes of the October 19, 2015 meeting**
  - 5.2 Accept reports of the General Manager and the Management Team for October/November 2015**
  - 5.3 Accept and file the statistics for the months October/November 2015**
  - 5.4 Approve recommendation of General Manager to set the 2016 Board of Directors' meeting dates**
  - 5.5 Continue to next meeting the revision of SCCAS policy and procedure #210 and #220**
- 6.0 Regular Agenda**
  - 6.1 General Manager's oral report**
  - 6.2 Consider and approve financial report for the months of October/November 2015 and take related actions**
  - 6.3 Consider and approve proposed fee changes for Planned Pethood low-cost spay/neuter program and spay/neuter services for impounded animals**
  - 6.4 Consider presentation on field patrol activities**
- 7.0 Adjourn Regular Meeting**
- 8.0 Correspondence**
  - 8.1 Letter from Pat Gromane**
  - 8.2 Letter from Stephanie Ronn**
  - 8.3 Letter from Stephanie Ronn**
  - 8.4 Email from Ann Barros**

### ***ACCOMMODATIONS FOR PERSONS WITH DISABILITIES***

The Santa Cruz County Animal Services Authority does not discriminate on the basis of disability and no person shall, by reason of a disability, be denied the benefits of its services, programs, or activities.

The Board holds all public meetings in accessible facilities. If you wish to attend the meeting and you require special assistance, please contact Rosanne Mayclin at 831/454-7205 (TDD 831/454-2123) at least 72 hours in advance of the meeting in order to make arrangements. As a courtesy, please attend the meeting smoke and scent free.

**Consent Agenda Item 5.1**

TO Santa Cruz County Animal Shelter Board of Directors  
FROM: Melanie Sobel, General Manager  
DATE: December 14, 2015  
SUBJECT: Approve Minutes of October 19, 2015 Meeting

**Recommendation:**

Approve the minutes from the Santa Cruz County Animal Shelter Board of Directors meeting of October 19, 2015.

**SANTA CRUZ COUNTY ANIMAL SHELTER  
BOARD OF DIRECTORS MEETING**  
Minutes of Monday, October 19, 2015 3:00 PM  
Board of Supervisors Chambers, Fifth Floor  
701 Ocean Street, Santa Cruz, CA 95060

VOTING KEY: M = Mauriello, P = Phares, S = Shull, C = Clark, W = Weiss, Mc=McCartney,  
V = Verinsky, B = Barreto,  
First initial indicates maker of motion, second initial indicates the "second"; upper case letter = "yes" vote; lower case letter = "no" vote; () = abstain; // = absent

- 1.0 Call to Order and Roll Call: Deputy Chief Steve Clark called the meeting to order at 3:03 pm. All Board members were present.
- 2.0 Introductions: there were no introductions.
- 3.0 Late Addition or changes to agenda: there were no late additions or changes to the agenda.
- 4.0 ORAL COMMUNICATION – Six people addressed the Board on matters unrelated to the day’s agenda.

5.0 CONSENT AGENDA

- 5.1 Approved minutes of the August 10, 2015 ASA Board Meeting
- 5.2 Accepted reports of the General Manager and Management Team for August and September 2015
- 5.3 Accepted the statistics for the months of August and September 2015
- 5.4 Accepted and approved quarterly report for all claims under \$10,000
- 5.5 Accepted and approved journal entry payments with the County of Santa Cruz for FY15/16 first quarter
- 5.6 Approved fixed asset inventory for 2015
- 5.7 Continued to next meeting the revision of SCCAS policy and procedures #210 and #220
- 5.8 Continued to next meeting the discussion of field patrol activities
- 5.9 Accepted and approved the record retention policy and procedure

MSPCWMcVB

6.0 REGULAR AGENDA

- 6.1 General Manager’s Oral report presented by Melanie Sobel.

Ms. Sobel introduced the Shelter’s new Program and Development Manager, Jen Walker to the Board. Jen brings a wealth of knowledge from dog behavior to humane education to shelter management and has recently secured a \$10,000 grant for our Humane Education Program.

Ms. Sobel informed the Board of the Shelter’s new program of utilizing inmates from the Rountree Detention Facility to help with daily tasks in the kennels. Ms. Sobel was pleased to report that the program could not be working better and is working well for

staff and the inmates as well. She acknowledged Board Members Mauriello and Verinsky for facilitating this arrangement to benefit the Shelter.

6.2 Approved financial reports for the months of August 2015 and September 2015.

Board Member Shull noted that she had attended the recent Parks and Rex event and thanked Ms. Sobel and shelter staff for such an outstanding event. The event was a collaboration between Animal Shelter and Parks Department.

Board Member Clark congratulated staff on the \$30,000 YTD revenue from the Cottage Shop.

Board action on Regular Agenda Item 6.2: VWMPSCMcB

7.0 Meeting adjourned at 3:45pm. Next regular meeting is scheduled for December 14, 2015 at 3:00 p.m.

## Consent Agenda Item 5.2

TO: Santa Cruz County Animal Shelter Board of Directors  
 FROM: Melanie Sobel, General Manager  
 DATE: December 14, 2015  
 SUBJECT: Reports from the Management Team for the months of October/November 2015

This report is provided to give you a brief synopsis of the programs provided and services rendered through the dedication and commitment of Santa Cruz County Animal Shelter's (SCCAS) staff and volunteers.

### General

- On October 22, 2015 Coffee Cat and Lulu's Coffee sponsored a fundraising day with a percentage of sales donated to SCCAS.
- On October 24, 2015 the Coastal Dog Owners Group hosted the Harvest, Hops and Hounds fundraiser which raised \$5,600 for SCCAS' Door-to-Door community outreach program. The funds will go towards the purchase of pet food, parasite control, dog houses, new leashes and collars, and enrichment toys.
- On November 6, 2015 SCCAS participated in the Project Homeless Connect event at the Veteran's Hall in Watsonville. Pet food, pet collars and leashes and pet jackets and spay/neuter information were distributed to attendees.
- On November 19, 2015 Odonata Wines hosted a fundraiser for SCCAS.
- On November 21, 2015 SCCAS participated in the El Nino Preparedness event at the Civic Center of Santa Cruz by providing information on emergency/disaster pet preparedness to approximately 700 attendees.
- On November 27, 2015 SCCAS hosted its annual Black FUR-iday adoption event which resulted in 13 animals adopted.
- SCCAS staff continues to offer training workshops for staff and volunteers on cat and dog behavior, performing dog shows to potential adopters, foster care of animals, and explaining the disposition decisions made on animals regarding health and temperament.
- SCCAS continues its partnership program, Canines Teaching Compassion, with the nonprofit organization UnChained. UnChained partners with local schools and organizations to help reduce violence in our homes, schools and communities by implementing humane education and innovative animal-assisted therapy programs, in an effort to teach children and adults the values of respect, empathy, good citizenship and kindness towards one another.
- SCCAS continues to expand its free targeted humane education program with after school presentations from preschool to 6th grade in Watsonville and Freedom public schools. SCCAS humane educator Julie Hitchcock, who is bilingual and has been a teacher in the Watsonville public school system for 18 years, is conducting the presentations which include topics such as: Pets and People: Needs We Share; What a Dog Needs; Safe Interactions with Dogs; Adopting a Pet; Learning to See Dogs as Individuals; Pet Overpopulation; Dog Bite Prevention; and Careers in Animal Welfare. This program reaches some of the most underserved areas in South County.

- Center for Animal Protection and Education (CAPE) and Santa Cruz SPCA continue to assist SCCAS with taking animals into their adoption program. This directly helps increase SCCAS's live animal release rate.
- Heading Home Rescue, Animal Shelter Relief and Four Paws to Love continue to take SCCAS' cats and kittens, many with medical issues and too young for adoption, into their adoption programs. This partnership continues to increase SCCAS' animal transfer rate significantly and directly helps increase SCCAS' live animal release rate.
- Friends of Watsonville Animal Shelter (FOWAS) continues to fund medical procedures for SCCAS animals, allowing them to be treated and made available for adoption. This directly helps increase SCCAS' live animal release rate. FOWAS also continues to assist in funding the Watsonville spay/neuter clinic.
- Project Purr continues to assist SCCAS with unsocial cat placement. This directly helps increase SCCAS' live animal release rate and prevents animals from entering the shelter.
- SCCAS staff continues to participate in FOWAS meetings held every other month.
- SCCAS General Manager writes a column on animal welfare issues for the bimonthly Shampoochez newsletter.
- SCCAS General Manager serves as a Board member on the California Animal Control Directors Association (CACDA).

### **SCCAS Staff**

SCCAS is pleased to announce the promotion of Andrea Jordan to Animal Services Coordinator. Andrea is a licensed veterinarian in Mexico and has extensive experience in animal behavior. We are currently recruiting to fill her previous position, Animal Care Worker. Additionally, SCCAS is recruiting for the following vacant positions: Animal Control Officer and Animal Services Assistant.

### **Watsonville Shelter**

SCCAS is working on future shelter improvement ideas: shade areas for the dog play yards and a small pole barn to store feral cat traps, cat loaders and house livestock.

SCCAS staff continues to attend bi-monthly Friends of Watsonville Animal Shelter (FOWAS) meetings. We are working with FOWAS to try to improve operations and facilitate community support and outreach to Watsonville residents.

### **Live Oak Shelter**

SCCAS has new winter hours for the Live Oak shelter location: 10:00 am to 6:00 pm seven days a week. The new winter hours only decrease the shelter's hours of operation open to the public by one hour per week.

The veterinary clinic continues to have interns from the Animal Behavior College Registered Veterinary Technician program. The Shelter will also serve as a clinical rotation stop for students at all stages of their education. Depending on the current stage of the program, students will be receiving instruction and performing duties in the Animal Care Department and also in the Veterinary Clinic.

At the clinic at the Live Oak shelter location in the months of October/November 2015, 601 animals were spay/neutered. Also, 164 animals were transferred to our adoption placement partner organizations. The Live Oak Shelter continues to work closely with Sheriff's Work Release, CalWorks and Court Referral for support.

### **Client Services**

Client Services continues to accommodate the increase in programs and services offered to the public. Staff provides excellent customer service while assisting a high volume of clients in person and on the phone. Staff processes adoptions, returns animals to their owners, schedules spay/neuter appointments, processes licenses, files lost and found reports, processes Administrative Citations, does research and follow up for the daily hold report, and sells merchandise and products to the public such as apparel with our new logo, flea prevention medication and pet identification tags to generate revenue.

Client services staff is increasingly helping with licensing, rabies vaccine data entry and donation processing.

### **Animal Control**

Animal Control Officers continue proactive patrols and the Door-to-Door community outreach campaign. Field Manager Todd Stosuy has completed updating Field policies and procedures and is working with the general manager to create a model ordinance for all jurisdictions.

Officer Stosuy has started his volunteer program to assist in the Field Services Door-to-Door campaign using the Humane Society of the United States' Pets for Life model. Volunteers have been trained on: How to Approach and Talk to People, Effective Spay/Neuter Outreach, Cats, Cats, Basic Dog Training and Constitutional Law and Civil Rights.

Animal control officers continue to provide excellent animal rescue and control service to residents of Santa Cruz County. Officers continue to rescue injured and mistreated animals, promote public safety assisting law enforcement and conducting vicious and/or dangerous animal investigations, and provide community outreach and education at special events.

Field Manager Todd Stosuy continues to represent our agency on a national level as President of the National Animal Control Association. Todd regularly attends and gives presentations at animal welfare conferences across the nation.

### **Volunteer and Humane Education Programs**

Volunteer orientations continue to be offered twice a month. SCCAS' partnership with YouthSERVE allows 13-18 year olds to volunteer with trained supervisors. Several continuing education seminars are being offered each month to volunteers, staff and now the public on topics such as animal handling skills and basic animal grooming.

Volunteers continue to assist in community outreach by SCCAS by taking adoptable dogs to venues.

Pet of the Week segments continue each week in the Santa Cruz Sentinel, Mid-County Post and KPIG. We are now showcasing a Pet of the Week segment once a month at KSBW television.

SCCAS continues to provide trainings and education opportunities for our volunteers and members of the public.

**Statistics**

Please see attached.

Melanie Sobel  
General Manager

Recommendation:

Accept and file the reports of the management team for the months of October/November 2015.



**Animal Control Report**  
**October and November 2015**  
**Todd Stosuy, Field Services Manager**

1. We continue to conduct proactive patrols on the Live Oak beaches, as well as other County and City Parks, for off leash violations.
2. At the end of September Animal Control Officers began responding to dozens of reports of sick raccoons in the Watsonville area. As we progressed into October the raccoons began appearing in Aptos as well. Wildlife Emergency Services sent several of the raccoons to testing at the State Lab and it was confirmed they have distemper. In the middle of November sick raccoons began appearing in the Seabright area of Santa Cruz. We sent out a press release regarding the situation, and the need to ensure domestic pet vaccinations, which was picked up by the Sentinel and several local television stations.
3. We worked with Santa Cruz Police on an alleged dog abuse case in which they arrested the suspect. We held a Post Seizure Hearing and the seizure was justified. I have been in contact with the District Attorney's Office to ensure that if the suspect is convicted that he be prevented from owning animals in the future.
4. We worked with Santa Cruz Police on a dog attack that occurred at Ocean View Park in Santa Cruz. We were able to determine suspect information based on previous encounters and issued a Be On The Lookout for the suspects. The dog was picked up in an unrelated incident and is in our custody.
5. I filed two counts of misdemeanor California Health and Safety code violations against a transient suspect who failed to quarantine his dog after it attacked and bit a person. Watsonville Police assisted with a Be On The Lookout for the suspect.
6. Officer Carla Braden is working with the United States Post Office on dog bite prevention workshops for their employees in our County.
7. We held a Vicious Dog Hearing in the City of Watsonville regarding two aggressive German Sheppards. The order was upheld. The owner violated the order a week later and was charged with a misdemeanor for failing to properly contain a dog deemed Vicious.
8. We worked with City of Santa Cruz Rangers on investigating reports of animal neglect in several homeless encampments located within City Parks.
9. Officer Rodolfo Manriquez has finished his field training and the majority of his in service training. He has begun working on his own and has assisted the department in decreasing response times and increasing proactive patrols.
10. We worked with the Shelter veterinarian on two separate animal neglect cases that required necropsies of the animals to determine cause of death. Both cases are still under investigation.
11. We issued multiple Vicious Animal Orders and Habitual Animal Orders within all contracted jurisdictions. Officers conducted facility checks at each location to ensure adequate containment for the dogs.

**Shelter Services Board Report  
October and November 2015  
By Ben Winkleblack, Shelter Manager**

In the months of October and November:

- 1,441 dog licenses were sold
- 310 animals were adopted
- 164 animals were transferred to another shelter or rescue agency
- 838 animals entered the shelter
- 169 animals were reunited with their owner
- 468 WebLicensing transactions

The veterinary team performed 601 surgeries in the months of October and November. The Client Services Staff signed 258 clients up to have their pets spayed or neutered through the Planned Pethood Program.

Weblicensing traffic continues to grow and we are currently processing 32% of canine license renewals online allowing the Client Services Staff more time to assist clients with adoptions and redemptions.

Andrea Jordan has filled the vacant Animal Services Coordinator position. Andrea is a licensed veterinarian in Mexico; she has worked in private veterinary practice, and worked with large and exotic animals. She brings supervisory experience, a fresh set of eyes to evaluation operations, and a personal interest in animal behavior.

Animal intake for all species for the report period has decreased by 6% when compared to the similar time period last year. Kittens are leading the intake decrease with 30% fewer kittens coming into the shelter than the same period last year.

Thank you,  
Ben Winkleblack

**Consent Agenda Item 5.3**

TO Santa Cruz County Animal Shelter Board of Directors  
FROM: Melanie Sobel, General Manager  
DATE: December 14, 2015  
SUBJECT: Statistics for the months of October/November 2015

**Recommendation:**

Accept and file the reports of statistics for the months of October/November 2015.



Santa Cruz County's Open-Door  
**ANIMAL SHELTER**  
 Serving Our Community's Neediest Animals

**All Jurisdictions Combined 10/1/15 through 11/30/15**

	CAT	DOG	KITTEN	OTHER	PUPPY	TOTAL
<b>Total Intake</b>	<b>229</b>	<b>321</b>	<b>102</b>	<b>145</b>	<b>41</b>	<b>838</b>
	CAT	DOG	KITTEN	OTHER	PUPPY	TOTAL
<b>Adopted</b>	65	80	155	118	51	310
<b>Died</b>	1	0	0	2	0	3
<b>Euthanized</b>	105	74	28	15	6	228
<b>Returned to Owner</b>	23	136	4	1	6	169
<b>Transferred</b>	35	31	37	55	6	164
<b>Total Outcome</b>	<b>229</b>	<b>321</b>	<b>155</b>	<b>118</b>	<b>51</b>	<b>874</b>

Intakes of Owner Requested Euthanasia From All Jurisdictions During 10/1/15 to 11/30/15 = 50

Animals on hand on November 30, 2015 = 190

Patrols by Jurisdiction	Patrols	Total Minutes
County of Santa Cruz	105	3,655
City of Santa Cruz	4	150
Watsonville	28	1,142
Live Oak and E. Cliff Beaches	30	1,115

Total Citations issued 92

**License Compliance and Revenue**

	Tags Sold	Revenue
CAPITOLA	52	\$1,574
COUNTY	892	\$26,431
SANTA CRUZ	247	\$7,361
SV	67	\$2,169
WATSONVILLE	153	\$4,960
<b>TOTAL</b>	<b>1,411</b>	<b>\$42,495</b>

### Consent Agenda Item 5.4

TO: Santa Cruz County Animal Shelter Board of Directors  
FROM: Melanie Sobel, General Manager  
DATE: December 14, 2015  
SUBJECT: Board of Directors' Meeting Schedule of 2016

Recommendation:

Approve the Board of Directors' meeting schedule for 2016\*.

Discussion:

Each December, your Board adopts the meeting schedule for the upcoming calendar year. The proposed meeting schedule keeps the current rotation whereby your Board meets on the second Monday of every other month, unless there is a holiday scheduled for that Monday or another conflict. For months with holidays on the second Monday, the meeting is scheduled on the following Monday.

\*Please note that the February 8, 2016 meeting will be held at the Santa Cruz County Sheriff Center, 5200 Soquel Avenue, Santa Cruz, in the Community Room due to a scheduling conflict with the Santa Cruz County Board Chambers.

The following dates are the proposed 2016 schedule:

February 8 (held at Santa Cruz County Sheriff Center, 5200 Soquel Avenue in the Community Room)

April 11

June 13

August 15

October 17 (October 10 is a holiday)

December 12

**Consent Agenda Item 5.5**

**TO** Animal Services Authority Board of Directors  
**FROM:** Melanie Sobel, General Manager  
**DATE:** December 14, 2015  
**SUBJECT:** Continue to Next Meeting the Revision of SCCAS Policy and Procedures #210 and #220

Recommendation:

Continue to next meeting the revision of SCCAS policy and procedures #210 and #220.

**Regular Agenda Item 6.1**

TO Santa Cruz County Animal Shelter Board of Directors  
FROM: Melanie Sobel, General Manager  
DATE: December 14, 2015  
SUBJECT: General Manager's Oral Report

General Manager will present an oral report on the Santa Cruz County Animal Shelter.

**Regular Agenda Item 6.2**

TO: Animal Services Authority Board of Directors  
FROM: Melanie Sobel, General Manager  
DATE: December 14, 2015  
SUBJECT: Financial Report for the period ending November 30, 2015

**Recommendation:**

Approve the Financial Report as presented for the period ending November 30, 2015.

**Discussion:**

The Financial Report ending November 30, 2015 reflects total revenues of \$81,560 and expenditures of \$333,898. YTD Revenues are \$2,090,509. YTD Expenditures are \$1,516,028. Current total revenues are 60% of a potential 42%. The percentage of current year expenditures is at 37%.

Licensing revenues YTD are \$124,841. At this point last year licensing revenues were \$128,779.



**Santa Cruz County Animal Services Authority  
Financial Summary for Fiscal Year 2015-2016  
For Months Ending November 30, 2015**

Revenues:	2015-16 Final Budget	2015-16 YTD Actuals	YTD Remaining	2014-15 YTD Actuals
ANIMAL LICENSES	\$345,000	\$124,841	\$220,159	\$128,779
INTEREST	\$14,000	\$7,838	\$6,162	\$5,552
RENTS & CONCESSIONS	\$200	\$91	\$109	\$99
RENTAL DEPOSIT/FORFEIT REVENUE	\$160	\$140	\$20	\$160
ST-MANDATED COST REIMBURSEMENT	\$0	\$0	\$0	\$4,749
HUMANE SERVICES	\$290,000	\$118,893	\$171,107	\$119,111
ADMINISTRATIVE SERVICES	\$1,200	\$643	\$557	\$670
COST RECOVERY-OTHER	\$7,500	\$3,905	\$3,595	\$3,291
MEMBER CONTRIBUTION	\$2,352,796	\$1,646,957	\$705,839	\$1,583,703
CHARGES FOR CURRENT SERVICES	\$53,000	\$16,045	\$36,955	\$15,010
ADMIN FINE FEES	\$25,000	\$10,369	\$14,631	\$8,470
GRANT SERVICES-NON INTERGOV	\$0	(\$3,217)	\$3,217	\$750
ANIMAL MICROCHIP FEES	\$24,000	\$8,651	\$15,349	\$9,265
ANIMAL RABIES FEES	\$8,000	\$5,225	\$2,775	\$2,529
ANIMAL SPAY&NEUTER FEES	\$110,000	\$46,242	\$63,758	\$89,395
SALES-OTHER-TAXABLE	\$28,000	\$24,785	\$3,215	\$8,055
CASH OVERRAGES	\$0	\$0	\$0	\$6
CONTRIBUTIONS and DONATIONS	\$170,000	\$70,412	\$99,588	\$39,616
NSF CHECKS	\$0	(\$40)	\$40	(\$58)
NSF CHECKS-RETURNED CHECK FEE	\$0	\$160	(\$160)	\$150
OTHER REVENUE	\$34,000	\$8,570	\$25,431	\$6,403
UNCLAIMED MONEY-ESCHEATED	\$0	\$0	\$0	\$0
BOND PROCEEDS	\$0	\$0	\$0	\$0
<b>TOTAL REVENUES:</b>	<b>\$3,462,856</b>	<b>\$2,090,509</b>	<b>\$1,372,347</b>	<b>\$2,025,705</b>

**Less Expenditures:**

Salaries and Benefits	\$2,755,951	\$1,032,846	\$1,723,105	\$1,072,985
Services and Supplies	\$1,004,648	\$446,864	\$557,784	\$403,800
Other Uses	\$145,272	\$36,318	\$108,954	\$0
Fixed Assets	\$0	\$0	\$0	\$0
<b>TOTAL EXPENDITURES:</b>	<b>\$3,905,871</b>	<b>\$1,516,028</b>	<b>\$2,389,843</b>	<b>\$1,476,785</b>

**Plus Contingency:**

	\$156,235	\$0	\$156,235	\$0
<b>TOTAL EXPENDITURES INCLUDING CONTINGENCY:</b>	<b>\$4,062,106</b>	<b>\$1,516,028</b>	<b>\$2,546,078</b>	<b>\$1,476,785</b>

<b>NET REVENUES OVER (UNDER) EXPENDITURE:</b>	<b>(\$599,250)</b>	<b>\$574,480</b>	<b>(\$1,173,730)</b>	<b>\$548,920</b>
---	--------------------	------------------	----------------------	------------------

<b>BEGINNING FUND BALANCE - UNDESIGNATED</b> (unaudited ending balance from 6/30/15)	\$1,780,210	\$1,780,210	\$1,780,210	\$0
---	-------------	-------------	-------------	-----

<b>ENDING FUND BALANCE - UNDESIGNATED</b>	\$1,180,960	\$2,354,690	\$606,480	\$548,920
---	-------------	-------------	-----------	-----------

**ANIMAL LICENSE DETAIL**

	2015-2016 YTD Actuals	2014-2015 YTD Actuals	PY COMPARISON
LICENSES - CAPITOLA	\$3,905	\$3,700	\$205
LICENSES - SANTA CRUZ	\$21,425	\$22,655	(\$1,230)
LICENSES- SCOTTS VALLEY	\$7,023	\$7,194	(\$171)
LICENSES- COUNTY	\$76,796	\$78,795	(\$1,999)
LICENSES- WATSONVILLE	\$15,692	\$16,435	(\$743)

\* Fund Balance Assigned for B. Jean Donation - balance as of 6/30/15 is \$545,023 (Unaudited)

\* Fund Balance - Non spendable for change fund/petty cash - balance as of 6/30/15 is \$900 (Unaudited)

SANTA CRUZ COUNTY ANIMAL SERVICES AUTHORITY FINANCIAL REPORT  
2015-2016

As of 11/30/15 from ONESolution  
SC CO ANIMAL SERVICES AUTHORITY  
Organization: 70 28

Acct	Acct Title	2015-16		November Actuals	2015-16 YTD Actuals	YTD Remaining	42%		2014-15 YTD Actuals	COMPARE		2014-15 Est./Actuals
		Final Budget	Est./Actuals				Percentage of CY Budget Actualized	Percentage of PY Eas Actualized		THRU NOV PY ACTUALS	November Actuals	
51000	SALARIES & BENF	\$2,755,951	\$2,755,951	\$264,539	\$1,032,846	\$1,723,105	37.48%	\$1,072,985	(\$40,139)	\$180,114	\$2,494,980	
61000	SERVICES & SUPL	\$1,004,648	\$1,004,648	\$69,339	\$446,864	\$557,784	44.48%	\$403,800	\$43,064	\$65,457	\$959,949	
90000	OTHER USES	\$145,272	\$145,272	\$0	\$36,318	\$108,954	25.00%	\$0	\$36,318	\$0	\$111,242	
86110	BUILDINGS AND IMPROVEMENTS	\$0	\$0	\$0	\$0	\$0	#DIV/0!	\$0	\$0	\$0	\$0	
86204	FIXED ASSETS	\$0	\$0	\$0	\$0	\$0	#DIV/0!	\$0	\$0	\$0	\$0	
98700	CONTINGENCIES	\$156,235	\$156,235	\$0	\$0	\$156,235	0.00%	\$0	\$0	\$0	\$0	
51000-98700	TOTAL EXPENDITURES	\$4,062,106	\$4,062,106	\$333,878	\$1,516,028	\$2,545,078	37.32%	\$1,476,785	\$39,244	\$245,571	\$3,566,171	
40100-42500	TOTAL REVENUES	\$3,462,856	\$3,462,856	\$81,560	\$2,090,509	\$1,372,347	60.37%	\$2,025,705	\$64,804	\$112,197	\$3,393,132	
	NET COST	\$599,250	\$599,250	\$252,318	(\$574,480)	\$1,173,730	-95.87%	(\$548,920)	\$25,660	\$133,373	\$173,039	
51000	REGULAR PAY-PER	1,708,627	1,708,627	\$130,805	\$642,267	\$1,066,360	37.59%	\$571,834	\$70,433	\$117,568	1,498,199	
51005	OVERTIME PAY-PE	3,880	3,880	\$541	\$3,510	\$370	90.46%	\$830	\$2,680	\$396	2,235	
51010	REGULAR PAY-EXT	52,686	52,686	\$881	\$7,469	\$45,217	14.18%	\$15,334	(\$7,865)	\$3,640	44,255	
51040	DIFFERENTIAL PAY	26,190	26,190	\$1,663	\$8,345	\$17,845	31.86%	\$8,285	\$60	\$2,146	44,255	
52010	OASDI-SOCIAL SE	134,991	134,991	\$9,515	\$48,903	\$86,088	36.23%	\$44,017	\$4,886	\$8,635	116,205	
52015	RETIREMENT	304,252	304,252	\$21,021	\$115,539	\$188,713	37.97%	\$107,860	\$7,679	\$20,445	274,339	
53010	EMPLOYEE INSURA	434,065	434,065	\$100,114	\$206,812	\$227,253	47.65%	\$193,446	\$13,367	\$27,289	403,481	
53015	UNEMPLOYMENT IN	5,538	5,538	\$0	\$0	\$5,538	0.00%	\$6,950	(\$6,950)	\$0	6,950	
54010	WORKERS COMPENS	85,722	85,722	\$0	\$0	\$85,722	0.00%	\$124,428	(\$124,428)	\$0	124,428	
51000	SALARIES & BENF	\$2,755,951	\$2,755,951	\$264,539	\$1,032,846	\$1,723,105	37.48%	\$1,072,985	(\$40,139)	\$180,114	\$2,494,980	
61115	POLICE SAFETY EQUIPMENT	500	500	\$0	\$0	\$500	0.00%	\$0	\$0	\$0	500	
61125	POLICE SAFETY EQUIPMENT	2,500	2,500	\$95	\$95	\$2,405	3.78%	\$436	(\$341)	\$358	3,300	
61215	RADIO SERVICES	28,000	28,000	\$2,524	\$12,190	\$15,810	43.53%	\$11,563	\$627	\$2,313	28,000	
61220	TELECOM SERVICES	26,000	26,000	\$0	\$10,153	\$15,847	39.05%	\$6,505	\$3,648	\$2,127	26,000	
61310	FOOD	7,500	7,500	\$478	\$3,063	\$4,437	40.84%	\$2,480	\$583	\$908	8,000	
61412	JANITORIAL SERVICES	9,000	9,000	\$728	\$2,912	\$6,088	32.36%	\$2,912	\$0	\$728	9,000	
61525	LIABILITY INSURANCE	32,519	32,519	\$0	\$28,865	\$3,654	88.76%	\$32,519	(\$3,554)	\$0	32,519	
61535	OTHER INSURANCE	2,927	2,927	\$0	\$1,000	\$1,927	34.16%	\$0	\$1,000	\$0	2,002	
61725	MAINT-OFFICE EQUIPMENT	600	600	\$52	\$268	\$332	44.66%	\$69	\$199	\$0	600	
61730	MAINT-OFFICE EQUIP-SVCS	2,000	2,000	\$0	\$169	\$1,831	8.47%	\$335	(\$166)	\$291	2,500	
61731	MAINT-OTHER EQUIP-SUP	2,000	2,000	\$43	\$989	\$1,011	49.43%	\$787	\$202	\$153	3,000	
61835	FACILITIES MAINT	22,000	22,000	\$457	\$941	\$21,059	4.28%	\$6,031	(\$5,090)	\$6,264	19,000	
61845	MAINT STRUCT IM	2,500	2,500	\$444	\$1,430	\$1,070	57.21%	\$0	\$1,430	\$0	1,500	
61846	MAINT-STRUCT/IMPS/GROS-OTHER-SUPPLIES	0	0	\$0	\$0	\$0	#DIV/0!	\$0	\$0	\$0	0	
61920	MEDICAL, DENTAL & LAB SUPPLIES	0	0	\$0	\$0	\$0	#DIV/0!	\$0	\$0	\$0	0	
61922	OTHER MEDICAL MATERIALS	100,000	100,000	\$0	\$0	\$0	#DIV/0!	\$0	\$0	\$0	92,500	
62020	MEMBERSHIPS	1,500	1,500	\$7,549	\$38,459	\$61,541	39.18%	\$36,241	\$2,218	\$8,563	92,500	
62111	MISCELLANEOUS EXPENSES	8,500	8,500	\$1,156	\$1,376	\$124	91.73%	\$1,556	(\$180)	\$1,556	1,696	
				\$6,310	\$6,310	\$2,190	74.23%	\$7,125	(\$815)	\$0	8,500	

Pos + = UP  
Neg ( ) = DOWN

**SANTA CRUZ COUNTY ANIMAL SERVICES AUTHORITY FINANCIAL REPORT  
2015-2016**

As of 11/30/15 from ONESolution  
SC CO ANIMAL SERVICES AUTHORITY  
Organization: 70 28

Acct	Acct Title	2015-16		2015-16 Est./Actuals	October Actuals	November Actuals	YTD Actuals	YTD Remaining	42%		2014-15 YTD Actuals	COMPARE THRU NOV PY ACTUALS		November Actuals	2014-15 Est./Actuals
		Final Budget	Est./Actuals						Percentage of CY Budget Actualized #DIV/0!	Percentage of PY Eas Actualized #DIV/0!		2014-15 PY Actuals	2014-15 NOV Actuals		
62112	CASH SHORTAGES	0	0	0	\$0	\$0	\$0	\$0	17.09%	#DIV/0!	\$0	\$0	\$0	\$0	0
62214	DUPLICATING SVCS.	4,000	4,000	0	\$209	\$38	\$684	\$3,316	35.40%	#DIV/0!	\$1,416	(\$732)	\$18	4,000	
62217	MISC NONINVENTORABLE ITEMS EXPENSE	0	0	0	\$0	\$0	\$0	\$0	100.00%	100.00%	\$1,090	(\$1,090)	\$0	1,090	
62219	PC SOFTWARE PURCHASES	2,500	2,500	2,500	\$0	\$1,058	\$1,058	\$1,442	42.32%	0.00%	\$0	\$1,058	\$0	1,500	
62221	POSTAGE	7,000	7,000	7,000	\$35	\$9	\$3,015	\$3,985	43.07%	34.02%	\$2,551	\$464	\$0	7,500	
62222	SUBSCRIPTIONS/PERIODICALS	125	125	125	\$0	\$0	\$125	\$125	0.00%	100.00%	\$26,956	(\$125)	\$0	125	
62223	SUPPLIES	75,000	75,000	75,000	\$3,608	\$5,429	\$22,983	\$52,117	30.51%	42.79%	\$26,956	(\$4,073)	\$3,296	63,000	
62225	NON-PC SOFTWARE	250	250	250	\$0	\$0	\$0	\$250	0.00%	0.00%	\$0	\$0	\$0	250	
62226	INVENTORABLE ITEMS	6,800	6,800	6,800	\$0	\$0	\$0	\$6,800	0.00%	37.65%	\$5,836	(\$5,836)	\$0	15,500	
62301	ACCOUNTING & AUDITING	13,000	13,000	13,000	\$0	\$0	\$0	\$13,000	0.00%	0.00%	\$0	\$0	\$0	13,000	
62310	BANKING SERVICES	24,000	24,000	24,000	\$2,556	\$2,531	\$13,775	\$10,225	57.40%	36.43%	\$9,108	\$4,668	\$1,805	25,000	
62316	COMPUTER PROF SVCS	0	0	0	\$0	\$0	\$0	\$0	#DIV/0!	#DIV/0!	\$0	\$0	\$0	0	
62317	CONSULTMG/TPC SVCE.	19,250	19,250	19,250	\$74	\$0	\$19,973	\$277	98.56%	96.83%	\$18,982	\$91	\$0	19,500	
62318	COUNTY COUNSEL	0	0	0	\$0	\$0	\$0	\$0	#DIV/0!	#DIV/0!	\$0	\$0	\$0	0	
62325	DATA PROCESSING	50,000	50,000	50,000	\$15,717	\$5,239	\$20,956	\$29,044	41.91%	33.36%	\$18,181	\$2,775	\$4,534	54,500	
62381	PROF & SPECIAL	147,000	147,000	147,000	\$10,998	\$11,447	\$48,856	\$98,144	33.24%	20.28%	\$22,305	\$26,551	\$10,784	110,000	
62399	VETERINARIAN SERVICES	77,000	77,000	77,000	\$10,852	\$9,207	\$44,987	\$32,013	58.43%	46.92%	\$37,537	\$7,450	\$10,657	80,000	
62500	EQUIPMENT RENTS & LEASES-	0	0	0	\$191	\$0	\$573	(\$573)	#DIV/0!	0.00%	\$0	\$0	\$0	340	
62610	RENTS & LEASES-	198,842	198,842	198,842	\$49,622	\$191	\$99,231	\$99,611	49.90%	49.70%	\$98,834	\$397	\$0	198,842	
62710	FIELD EQUIPMENT	1,200	1,200	1,200	\$0	\$199	\$475	\$725	39.61%	70.93%	\$709	(\$234)	\$0	1,000	
62801	ADVERTISING & PROMOTION	2,000	2,000	2,000	\$2,038	\$2,498	\$5,027	(\$3,027)	251.37%	16.46%	\$444	\$4,583	\$444	2,700	
62842	INVENTORY MATERIALS PURCHASED	20,000	20,000	20,000	\$2,694	\$617	\$9,594	\$10,406	47.97%	47.82%	\$9,564	\$31	\$2,367	20,000	
62857	SPECIAL MISC EXP-SUPPLIES	500	500	500	\$15	\$1,778	\$1,823	(\$1,323)	364.50%	24.54%	\$123	\$1,700	\$31	500	
62890	SUBSCRIPTIONS/BOOKS	500	500	500	\$0	\$0	\$0	\$500	0.00%	13.48%	\$67	(\$67)	\$67	500	
62893	TOWING	0	0	0	\$0	\$0	\$0	\$0	#DIV/0!	#DIV/0!	\$0	\$0	\$0	0	
62914	TRAVEL-EDUCATION	2,500	2,500	2,500	\$250	\$50	\$525	\$1,975	21.00%	60.00%	\$450	\$75	\$0	750	
62922	TRAVEL-LODGING	1,200	1,200	1,200	\$180	\$0	\$180	\$1,020	14.99%	43.94%	\$527	(\$347)	\$0	1,200	
62924	TRAVEL-MEALS	500	500	500	\$0	\$104	\$104	\$396	20.77%	0.00%	\$0	\$104	\$0	500	
62926	TRAVEL-MILEAGE	1,000	1,000	1,000	\$637	\$33	\$776	\$224	77.63%	16.48%	\$181	\$595	\$0	1,100	
62928	TRAVEL-OTHER	100	100	100	\$0	\$0	\$0	\$100	0.00%	0.00%	\$0	\$0	\$0	800	
62930	REGISTRATIONS	335	335	335	\$0	\$0	\$60	\$275	17.91%	25.37%	\$85	(\$25)	\$0	335	
62935	SERVICE CENTER	20,000	20,000	20,000	\$4,629	\$4,087	\$11,887	\$8,113	59.43%	44.68%	\$8,936	\$2,951	\$1,389	20,000	
62940	TRAVEL ADVANCES	0	0	0	\$0	\$0	\$0	\$0	#DIV/0!	#DIV/0!	\$0	\$0	\$0	0	
63070	UTILITIES	82,000	82,000	82,000	\$7,925	\$6,146	\$33,201	\$48,799	40.49%	40.17%	\$31,332	\$1,869	\$6,834	78,000	
74230	PRINCIPAL ON LEASE PURCHASES	0	0	0	\$0	\$0	\$0	\$0	#DIV/0!	#DIV/0!	\$0	\$0	\$0	0	
61000	SERVICES & SUPPLIES	\$1,004,648	\$1,004,648	\$1,004,648	\$143,442	\$69,339	\$446,864	\$557,784	44.48%	42.06%	\$403,800	\$2,926	\$55,457	\$959,949	

Pos + = UP  
Neg ( ) = DOWN

SANTA CRUZ COUNTY ANIMAL SERVICES AUTHORITY FINANCIAL REPORT  
2015-2016

As of 11/30/15 from ONESolution  
SC CO ANIMAL SERVICES AUTHORITY  
Organization: 70 28

Acct	Acct Title	2015-16 Final Budget	2015-16 Est./Actuals	October Actuals	November Actuals	2015-16 YTD Actuals	YTD Remaining	Percentage of CY Budget Actualized	Percentage of PY Eas Actualized	COMPARE		2014-15 Est./Actuals
										2014-15 YTD Actuals	THRU NOV PY ACTUALS	
75315	COUNTY OVERHEAD (see 3550)	\$145,272	\$145,272	\$0	\$0	\$36,318	\$108,954	25.00%	0.00%	\$0	\$0	\$111,242
90001	OPERATING TRSF OUT	\$0	\$0	\$0	\$0	\$0	(\$0)	0.00%	0.00%	\$0	\$0	\$0
90000	OTHER USES	\$145,272	\$145,272	\$0	\$0	\$36,318	\$108,954	25.00%	0.00%	\$0	\$36,318	\$111,242
86204	EQUIPMENT	\$0	\$0	\$0	\$0	\$0	\$0	0.00%	0.00%	\$0	\$0	\$0
86204	FIXED ASSETS	\$0	\$0	\$0	\$0	\$0	\$0	0.00%	0.00%	\$0	\$0	\$0
98700	APPROP FOR CONTINGENCIES	\$156,235	\$156,235	\$0	\$0	\$0	\$156,235	0.00%	0.00%	\$0	\$0	\$0
98700	CONTINGENCIES	\$156,235	\$156,235	\$0	\$0	\$0	\$156,235	0.00%	0.00%	\$0	(\$1,163)	\$0
40100	PROPERTY TAXES	\$0	\$0	\$0	\$0	\$0	\$0	0.00%	0.00%	\$0	\$0	\$0
40230	ANIMAL LICENSES	\$345,000	\$345,000	\$21,590	\$21,464	\$124,841	\$220,159	36.19%	38.44%	\$128,779	(\$3,938)	\$335,000
40430	INTEREST	\$14,000	\$14,000	\$1,615	\$1,590	\$7,838	\$6,162	55.99%	43.37%	\$5,552	\$2,287	\$12,800
40440	RENTS & CONCESS	\$200	\$200	\$48	\$0	\$91	\$109	45.62%	47.61%	\$99	(\$8)	\$208
40441	RENTAL DEPOSIT/FORFEIT REVENUE	\$160	\$160	\$140	\$0	\$140	\$20	87.50%	100.00%	\$160	(\$20)	\$160
40872	ST-MANDATED COST REIMBURSEMENT	\$0	\$0	\$0	\$0	\$0	\$0	#DIV/0!	100.00%	\$4,749	(\$4,749)	\$4,749
40984	STATE-OTHER	\$0	\$0	\$0	\$0	\$0	\$0	#DIV/0!	#DIV/0!	\$0	\$0	\$0
41096	INTERGOVERNMENTAL REV	\$0	\$0	\$0	\$0	\$0	\$0	#DIV/0!	#DIV/0!	\$0	\$0	\$0
41510	HUMANE SERVICES	\$290,000	\$290,000	\$18,402	\$24,878	\$118,893	\$171,107	41.00%	42.54%	\$119,111	(\$218)	\$280,000
42010	ADMINISTRATIVE SERVICES	\$1,200	\$1,200	\$168	\$139	\$643	\$557	53.58%	55.83%	\$670	(\$27)	\$1,200
42022	COST RECOVERY-OTHER	\$7,500	\$7,500	\$1,017	\$795	\$3,905	\$3,595	52.06%	43.89%	\$3,291	\$613	\$7,500
42044	MEMBER CONTRIBUTION	\$2,352,796	\$2,352,796	\$705,839	\$0	\$1,646,957	\$705,839	70.00%	70.00%	\$1,583,703	\$63,254	\$32,077
42047	OTHER CHARGES CURRENT SERVICES	\$53,000	\$53,000	\$6,615	\$0	\$16,045	\$36,955	30.27%	30.02%	\$15,010	\$1,035	\$430
42073	ADMINISTRATIVE FINE FEES	\$25,000	\$25,000	\$2,694	\$2,649	\$10,369	\$14,631	41.48%	43.44%	\$8,470	\$1,899	\$9,350
42074	GRANT SERVICES-NON INTERGOV	\$0	\$0	\$10,663	\$500	(\$3,217)	\$3,217	#DIV/0!	12.24%	\$750	(\$3,967)	\$0
42205	ANIMAL MICROCHIP FEES	\$24,000	\$24,000	\$1,391	\$1,775	\$8,651	\$15,349	36.05%	41.18%	\$9,265	(\$614)	\$6,125
42206	ANIMAL RABIES FEES	\$8,000	\$8,000	\$858	\$1,032	\$5,225	\$2,775	66.31%	36.13%	\$2,529	\$2,696	\$22,500
42207	ANIMAL SPAY&NEUTER FEES	\$110,000	\$110,000	\$7,132	\$9,955	\$46,242	\$63,758	42.04%	60.00%	\$89,395	(\$43,153)	\$7,215
42234	SALES-OTHER-TAXABLE	\$28,000	\$28,000	\$6,331	\$4,512	\$24,785	\$3,215	88.52%	24.41%	\$8,055	\$16,730	\$33,000
42362	CASH OVERAGES	\$0	\$0	\$0	\$0	\$0	\$0	#DIV/0!	46.15%	\$6	(\$6)	\$0
42372	CONTRIBUTIONS AND DONATIONS	\$170,000	\$170,000	\$10,142	\$10,289	\$70,412	\$99,588	41.42%	23.30%	\$39,616	\$30,796	\$170,000
42380	NSF CHECKS	\$0	\$0	(\$115)	\$115	(\$40)	\$40	#DIV/0!	66.67%	(\$58)	\$18	(\$87)
42381	NSF CHECKS-RETURNED CHECK	\$0	\$0	\$40	\$40	\$160	(\$160)	#DIV/0!	93.75%	\$150	\$10	\$160
42384	OTHER REVENUE	\$34,000	\$34,000	\$1,549	\$1,828	\$8,570	\$25,430	25.20%	20.01%	\$6,403	\$2,166	\$32,000
42390	UNCLAIMED MONEY-ESCHEATED	\$0	\$0	\$0	\$0	\$0	\$0	#DIV/0!	#DIV/0!	\$0	\$0	\$0
42500	BOND PROCEEDS	\$0	\$0	\$0	\$0	\$0	\$0	#DIV/0!	#DIV/0!	\$0	\$0	\$0
42981	LICENSES - CAPITOLA	\$0	\$0	\$797	\$765	\$3,905	(\$3,905)	0.00%	#DIV/0!	\$3,700	\$205	\$0
42982	LICENSES - SANTA CRUZ	\$0	\$0	\$3,616	\$3,558	\$21,425	(\$21,425)	0.00%	#DIV/0!	\$22,655	(\$1,230)	\$0
42983	LICENSES- SCOTT'S VALLEY	\$0	\$0	\$796	\$1,000	\$7,023	(\$7,023)	0.00%	#DIV/0!	\$7,194	(\$171)	\$0
42984	LICENSES- COUNTY	\$0	\$0	\$13,705	\$13,288	\$76,796	(\$76,796)	0.00%	#DIV/0!	\$78,795	(\$1,999)	\$0
42986	LICENSES- WATSONVILLE	\$0	\$0	\$2,676	\$2,853	\$15,692	(\$15,692)	0.00%	#DIV/0!	\$16,435	(\$743)	\$0
40100-42500	REVENUES	\$3,462,856	\$3,462,856	\$796,119	\$81,560	\$2,090,509	\$1,372,347	60.37%	59.70%	\$2,025,705	\$64,804	\$3,393,132

### Regular Agenda Item 6.3

TO: Santa Cruz County Animal Shelter Board of Directors  
FROM: Melanie Sobel, General Manager  
DATE: December 14, 2015  
SUBJECT: Consider and Approve Proposed Fee Changes for Planned Pethood Program and Spay/Neuter Services for Impounded Animals

#### Recommendation:

Consider and approve proposed fee changes for Planned Pethood low-cost spay/neuter program and spay/neuter services for impounded animals.

#### Discussion:

SCCAS' Planned Pethood program, established in July 2011, provides the County's only comprehensive low-cost spay/neuter, microchip and rabies vaccination program for dogs, cats and rabbits. Since the inception of the program, we have maintained standard fees that have applied to all Santa Cruz County residents, regardless of income.

We are proposing to alter the Planned Pethood fees (please see attachment) to try to serve the pet owners and animals most in need in the community. For County residents, we are increasing the dog surgery fee to \$175 and decreasing the cat surgery fee (for even further incentive) to \$25. All Pit Bull and Chihuahua surgeries will remain at \$50. The microchip fee is reduced to \$10 (for further incentive). We also increased the fee for situations that require additional medical supplies and veterinarian labor to \$25. Additionally, we are adding a \$50 fee for animals determined to be obese due to the increase of veterinarian labor required in such cases.

For limited-income County residents: the dog surgery fee is \$50, cat surgery fee is \$10, and rabbit surgery fee is \$50. Limited income eligibility will be determined through proof of government assistance or proof of income levels per household (income limits used are from the Santa Cruz County Planning Department's maximum annual household income limits for 2014).

We will continue to waive fees when necessary to accommodate special circumstances on an individual basis. Our Planned Pethood fund helps us recover lost revenue in such cases.

For spay/neuter services offered to animal owners (upon redemption of animals from the shelter), we are proposing to streamline all spay/neuter surgeries to a flat fee (please see attachment). Spay/neuter for cats will be \$50 and dog spay/neuter surgeries will be \$175. We will continue to waive fees when necessary to accommodate special circumstances on an individual basis.

**Planned Pethood Spay/Neuter Fees**

	<b>2015</b>	<b>Proposed 2016</b>
Dog		
Cat	\$100-	\$175
Rabbit	\$50-	\$25
"Fix-a-Pit" Program all Pit Bulls & Chihuahuas	\$75	\$75
Animals over 100 lbs., in heat, pregnant or cryptorchid add	\$50	\$50
Animals determined obese by veterinarian add	\$20-	\$25
<b>Fees for Additional Required Services</b>		\$50
Microchip		
License	\$15-	\$10
Rabies	\$29	\$29
Late drop-off fee	\$10	\$10
Late pick-up fee	\$20	\$20
Blood panel for dogs over 7 years old and cats over 10 years old	\$40/night	\$40/night
	\$55	\$55
<b>Planned Pethood Spay/Neuter Fees for Limited Income*</b>		
Dog		
Cat		\$50
Rabbit		\$10
		\$50

\*Limited income eligibility determined through proof of receipt of government assistance\*\* **OR** through a year-to-date pay stub or W2 tax form that proves the following:

- 1 person household—maximum of \$35,350 annual income
- 2 person household—maximum of \$40,350 annual income
- 3 person household—maximum of \$45,400 annual income
- 4 person household—maximum of \$50,400 annual income

Some examples of documents include: Section 8 Housing, Food Stamps, Major VA Disability, Medicaid, Social Security Disability (SSD), etc.

**Spay/Neuter Fees for Impounded Animals**

**Proposed 2016**

**2015**

	2015	Proposed 2016
Cats		
Neuter	\$55	\$50
Spay	\$80	\$50
Dogs		
Neuter 30 lbs/under	\$100	\$175
Neuter 50 lbs/under	\$110	\$175
Neuter 75 lbs/under	\$120	\$175
Neuter 99 lbs/under	\$130	\$175
Neuter +100 lbs	\$150	\$175
Spay 30 lbs/under	\$100	\$175
Spay 50 lbs/under	\$120	\$175
Spay 75 lbs/under	\$130	\$175
Spay 99 lbs/under	\$160	\$175
Spay +100 lbs	\$190	\$175

**Regular Agenda Item 6.4**

TO Santa Cruz County Animal Shelter Board of Directors  
FROM: Melanie Sobel, General Manager  
DATE: December 14, 2015  
SUBJECT: Consider Presentation on Field Patrol Activities

Field Services Manager Todd Stosuy will give a presentation (please see attachment) to the SCCAS Board of Directors.



**Santa Cruz County Animal Control**

- Current Staffing**
- 1 Field Manager
  - 3 Full Time Animal Control Officers
  - 1 Full Time Animal Control Officer in training
  - Currently in process of hiring 5<sup>th</sup> Officer
  - Statistics show drop in patrol activities during lower staffing levels

- Shifts and Jurisdictions**
- County of Santa Cruz, City of Watsonville, City of Santa Cruz, City of Scotts Valley
  - 24 hours a day, seven days a week, including all holidays
  - 10 hour shifts- 2 weekends / 3 weekdays
  - Summer- On Duty 7AM to 8:30PM
  - Winter- On Duty 7AM to 6:30PM
  - On call emergencies only all other hours

- Service Call Guidelines**
- Responses based on priority
  - Priority 1- Person in danger or at risk
  - Priority 2- Animal in danger or at risk
  - Priority 3- Non- Emergency (2 hour response)
  - Priority 4- Non-Emergency same day if possible
  - Priority 5- Normal Response (low priority)
  - Priority 6 – Extra Service

### Service Call Guidelines

- **Priority 1: Person in danger or at risk**
  - Striving for a 30 minute response time
- Bite or attack against human in progress (law enforcement should also respond)
- Bite or attack against human is over, but bite animal UNCONFINED in the area
- Animals threatening human safety
- Assist law enforcement, fire department or paramedics

### Service Call Guidelines

- **Priority 2: Animal in danger or at risk**
  - striving for a 30 minute response time
- Animal attacking another animal in progress
- Animal attacking another animal is over, but the attacking animal is UNCONFINED in the area
- Animal in immediate distress, i.e. hit by car, tangled in tie out, in hot car, etc
- Bite animals not checked into quarantine within five days of bite

### Service Call Guidelines

- **Priority 3: Non-emergency next available officer**
  - approximately 2 hour response time
- Pick up aggressive animal that is CONFINED
- Pick up bite or attack dog where the animal is CONFINED and the victim is safe
- Bite follow-ups
- Take animals to County Health for Testing
- Pick up animals from SCVH

### Service Call Guidelines

- **Priority 4:**
  - To be completed same day if possible
- Stray confined animals
- Animal neglect calls
- Owned aggressive where the animal is not currently running at large, but habitually running at large

### Common Neglect Calls



### Service Call Guidelines

- **Priority 5:**
  - Normal Response
- Dead animal pickups
- Patrol problem areas
- Municipal or County Code enforcement
- Nuisance complaints

### Service Call Guidelines

- **Priority 6:**
  - Extra Service
- Take traps to those who need assistance
- Take citations to courthouse
- Any other extra service

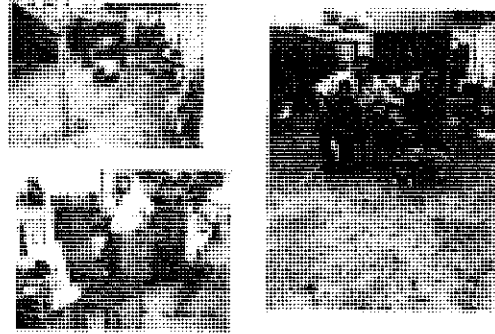
### Proactive Services

- Patrols of City and County Parks
- Patrols of streets with high rates loose dogs and breeding cats
- Door to Door Outreach
- Attending Community Events

### Community Animal Control

- Based on Department of Justice Community Oriented Policing Services (COPS)
- Prevents neglect, breeding and other issues
- Builds trust between community and agency
- Empowers communities
- Mutual respect and trust built between citizens and officers

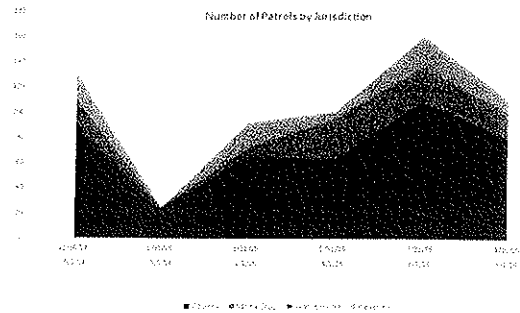
### Community Animal Control

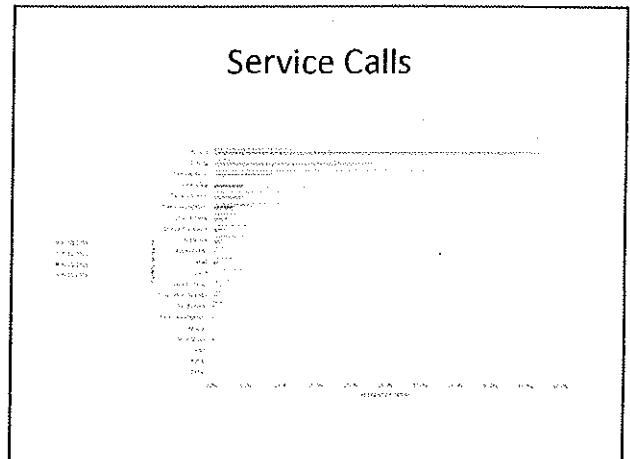
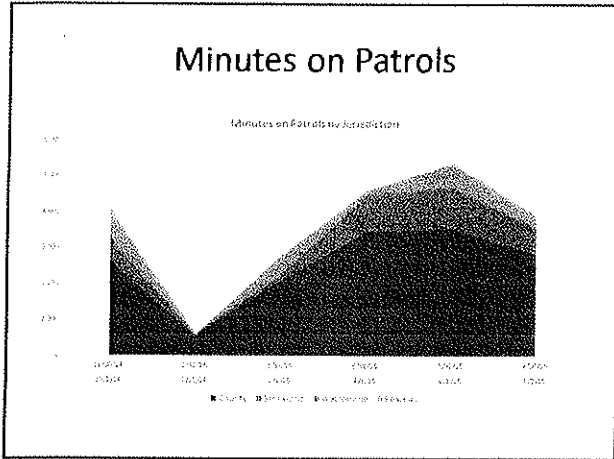


### Patrols of City/County Parks

- Created based on citizen complaints
- Most Common
  - 20<sup>th</sup> Avenue Beaches, Live Oak
  - Brommer Street Park, Live Oak
  - Anna Jean Cummings Park, Soquel
  - Highlands Park, Ben Lomond
  - Jose Avenue Park, Live Oak
  - Seascape Park, Aptos

### Patrols





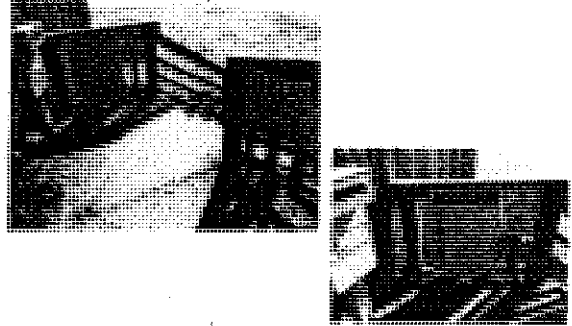
- ### Service Calls
- Report Writing approximately 50% of time
  - Recommend portable database for vehicles
  - Can park at problem locations and write reports
  - Presence of officer is deterrent
  - Will increase patrol hours

- ### Live Oak Beaches
- Current hot spot and most requests for patrols
  - Problems with enforcement
    - Beach spread out
    - Numerous entrances and exits
    - People run, text each other, use fog horns, etc
    - Poor signage (defaced and stolen)
    - Law requires 24 hour a day enforcement
    - Verbal hostility and anger

20<sup>th</sup> Avenue



20<sup>th</sup> Avenue



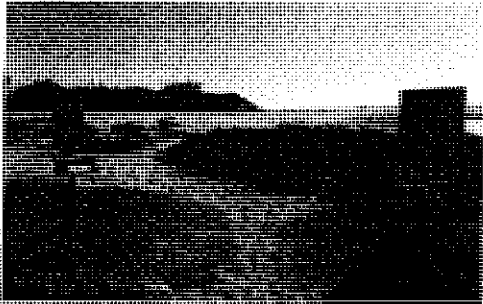
21<sup>st</sup> Avenue



East Cliff at Corcoran Lagoon

- Only 1 sign for 3 separate entrances
- Previous signs have been stolen
- Previous signs have also been covered by sand dunes

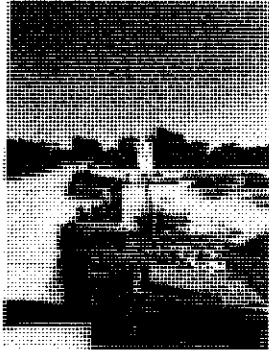
East Cliff at Corcoran Lagoon  
Main entrance



East Cliff at Corcoran Lagoon  
Side entrance

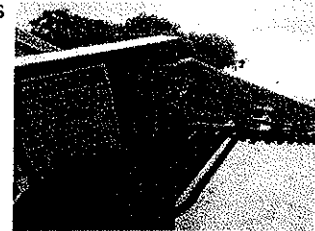


East Cliff at Corcoran Lagoon  
3<sup>rd</sup> entrance down road



26<sup>th</sup> Avenue

- The green sign in the photo is the ONLY sign that was not stolen out of approximately 15 similar signs installed along East Cliff and beach entrances



East Cliff at Moran Lake  
only sign 3 entrance points



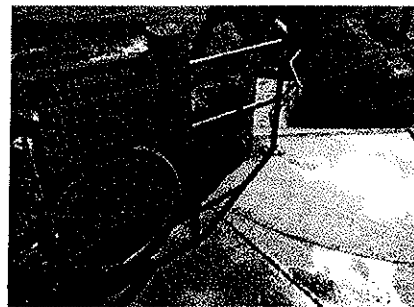
East Cliff at Moran Lake  
no signs near crosswalk



Pleasure Point Park



East Cliff and 33rd

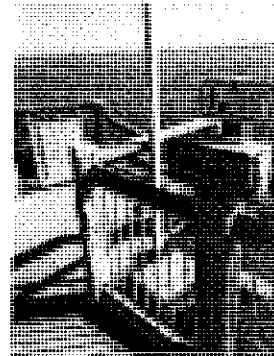




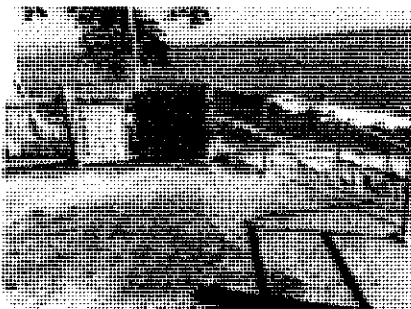
East Cliff and 36th



East Cliff and 38th



East Cliff and 41st



Questions?





RECEIVED  
 OCT 19 2015  
 County Administrative Office

Santa Cruz County Animal Services Board

*cc Nicole Melanick*  
 /??

As a regular visitor to the Live Oak beaches between Sunny Cove and Pleasure Point, there has definitely been an increase in off-leash dogs due to the lack of enforcement. It's quite disturbing to be walking on the beach and have some strange dog come running up either wanting to jump on you or bark in your face. It's not what I would envision as a peaceful stroll in a county park area that should be relatively safe.

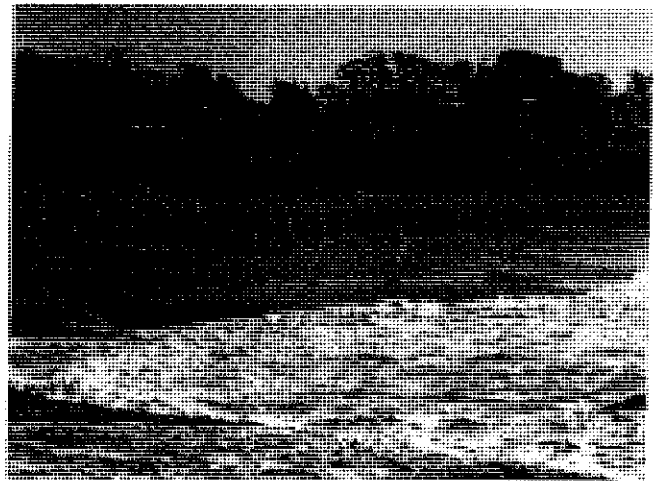
Secondly have any of the board members tried to contact SC County Animal Services by phone to report a problem? I'd suggest you try it just to understand how unfriendly their telephone system is when you wish to report an urgent issue. Menu after menu, etc. no one to take the call. I cannot think of a public organization that has such a significant road block to a service request.

*Peace  
 fix*

Pat Gromane  
 Corcoran Ave  
 Live Oak  
 10/17/15

To: Santa Cruz County Animal Services Board October 21<sup>st</sup>.

There seems to be a large disconnect between what the Animal Services people say at meetings and what actually transpires. At the meetings they say they do patrols of the beaches yet we have a large problem of dogs running off-leash with a clear ordinance and signage that indicates that dogs must be on-leash. Today on a simple morning walk, I passed anywhere from fifteen to twenty dogs off-leash between the 20<sup>th</sup> Ave access and the 26<sup>th</sup> Ave access. I had to exit as I was intimidated by the large number of dogs running around. Owners were "in the vicinity" but with no clear control of their dogs. Two almost knocked into me chasing each other. How can one enjoy a stroll on the beach with these dogs running wild?



How can we get some regular patrols? Someone needs to be monitoring how many times there are patrols at the beach. Although there have been "incidents", no one seems to be concerned. I have neighbors that won't even go to the beach as a result of these out of control dogs. This is not acceptable that I and my neighbors' access to the beach is restricted when most of us chose to move here so we could enjoy the beach safely.

From: Stephanie Ronn Live Oak

I refuse to give my address as I've heard of dog owners learning of the complaints and taking action against the one complaining.

To: Santa Cruz County Animal Services Board November 27th.

35

MANY THANKS!!!

I recently wrote about the off-leash dogs running wild on the Live Oak beaches between Pleasure Point and Sunny Cove. Thanks to the stepped up patrols by the SC County Animal Services, there's been a huge reduction in the number of dogs off-leash on the beaches. I now feel much safer taking an afternoon stroll on the beach. With the smaller number of off-leashers, there's less prevalence of the "packing-up" behavior, which frankly I find scary. Keep up the good work!

Please pass on my gratitude to those responsible for the patrols, they really have made a difference.

From: Stephanie Ronn Live Oak

**Melanie Sobel**

---

**From:** Ann Barros [abarros@pacbell.net]  
**Sent:** Sunday, December 06, 2015 5:59 PM  
**To:** Todd Stosuy  
**Cc:** Melanie Sobel; Juanita Gunter  
**Subject:** County Leash Law

Dear AS Officer Todd Stosuy and staff,  
I am a homeowner on 26th Ave. for 22 years and love to walk the beach down the steps at the end of my street daily, if possible.  
Prior to buying my home on 26th Ave., I rented near the same beach so have been seeing it change over 43 years. The off leash dog population has grown alarmingly since 1972 when I first moved to this neighborhood!!

I want to thank you for finally enforcing the leash law on this 26th Avenue beach.  
It was getting so filled with off leash dogs, large dogs, sometimes running in packs, that I had to start walking very defensively to avoid packs of dogs.  
Dogs should not have priority over people when it comes to enjoying the neighborhood beach!  
For me, it is a public safety issue, and I have spoken at prior on leash law dog meetings before, testifying to having been toppled over by a pack of off leash running dogs more than once.  
The full velocity of off leash dogs running is dangerous to people, especially children and smaller people, like myself.

Lately (in the last 2-3 weeks) at least, I have noticed a decrease in the amount of off leash dogs!  
My neighbor tells me that there has been more enforcement of the on-leash law and officers patrolling the beach at 26th Ave. and Pleasure Point.  
Thank you for helping to keep our beach safe! And please continue to enforce the on leash law.

Please include this email in the Dec. 14 meeting, as I will not be able to attend this time.  
Thank you kindly,  
Ann Barros